



ASIC
Australian Securities &
Investments Commission

Australian insolvency statistics

Released: 24 May 2021

Series 2B: Notification of all external administration and controller appointments - WEEKLY

Contents

Interpretation

Table 2B.1: Notification of all external administration and controller appointments - Total, WEEKLY, Base level, FY20 & FY21 YTD

Chart 2B.1: Notification of all external administration and controller appointments - Total, WEEKLY, Base level, FY20 & FY21 YTD

Table 2B.2: Notification of all external administration and controller appointments - Appointment type, WEEKLY, FY20 & FY21 YTD

Chart 2B.2: Notification of all external administration and controller appointments - Appointment type, WEEKLY, FY20 & FY21 YTD

Table 2B.3: Notification of all external administration and controller appointments - Appointment type, 12-month rolling average

Chart 2B.3: Notification of all external administration and controller appointments - Appointment type, 12-month rolling average

Table 2B.4: Notification of all external administration and controller appointments - Appointment type, Financial year to date

Chart 2B.4: Notification of all external administration and controller appointments - Appointment type, Financial year to date

Table 2B.5: Notification of all external administration and controller appointments - Region, 12-month rolling average

Chart 2B.5: Notification of all external administration and controller appointments - Region, 12-month rolling average

Table 2B.6: Notification of all external administration and controller appointments - Region, Financial year to date

Chart 2B.6: Notification of all external administration and controller appointments - Region, Financial year to date

Table 2B.7: Notification of all external administration and controller appointments - Industry, 12-month rolling average

Chart 2B.7: Notification of all external administration and controller appointments - Industry, 12-month rolling average

Table 2B.8: Notification of all external administration and controller appointments - Industry, Financial year to date

Chart 2B.8: Notification of all external administration and controller appointments - Industry, Financial year to date

More information available from the [ASIC website](#)

Australian insolvency statistics

[INFORMATION SHEET 80: How to interpret ASIC insolvency statistics](#)

[SERIES 1: Companies entering external administration and controller appointments](#)

[SERIES 2: External administration and controller appointments](#)

Inquiries

For further information about these and related statistics, email insolvencystatistics@asic.gov.au.

Series 2B: Notification of all external administration and controller appointments – weekly

As a result of the COVID-19 pandemic, ASIC releases weekly statistics of all external administration and controller appointments (new Series 2B.1 to 2B.8). Series 2B records the total number of external administration and controller appointments. Schemes of arrangement or compromise are excluded.

Note: Series 2 differs from Series 1, which records the number of companies entering external administration and controller appointments. We only include a company once in Series 1, regardless of whether it subsequently enters another form of external administration or controller appointment. The only exception occurs where a company, taken out of external administration (e.g. as the result of a court order), later re-enters external administration or controller appointment.

Source

The source of these statistics is the notification of appointment (e.g. Forms 505) lodged with ASIC by external administrators and controllers. The region is the state the company was originally incorporated in and the industry is the Australian and New Zealand Standard Industrial Classification (ANZSIC) indicated by the external administrator or controller.

Series 2 – All external administration and controller appointments

To improve the accuracy of published information, we currently release Series 2 statistics about all external administration and controller appointments one month in arrears (e.g. statistics published for the month relate to appointments made in the preceding month) because:

- the statutory period for lodging the notification of appointment differs for appointment types:
 - within 14 days after appointment for court liquidations, creditors voluntary winding ups and controller appointments
 - within two business days after appointment for restructuring plan practitioners, and within two business days of adopting the process for simplified liquidations
 - within one business day after appointment for voluntary administrations and restructuring practitioners(e.g. notification of an appointment that occurs on the last day of the month may not be required to be lodged until the 14th day of the next month)
- the lodgment may be late, which may be exacerbated by COVID 19
- ASIC may not have processed paper forms received by month end
- the data is collated based on the date of appointment, not the form lodgment date.

Series 2B.1 and 2B.2: Notification of all external administration and controller appointments – Total, Weekly

- Weekly figures (shaded in blue) are the number of appointment documents lodged and do not accurately represent the total number of external administration and controller appointments in the period.
- The weekly figures will be updated each week for new lodgments of notifications of appointment until the statistics for a given period have been published in the monthly statistics (Series 2).
- The number of notifications of appointment lodged in the most recent two weeks (shaded red) will be subject to the greatest increases as additional notifications of appointment are lodged, and should not be taken as representing the actual number of external administration and controller appointments in those weeks.
- Base level weekly figure is the average of comparable weekly figures for FY 2017, FY 2018 and FY 2019 i.e the base level for Week 32 is the average of Week 32 of each of FY 2017, FY 2018 and FY 2019.

Series 2B.3, 2B.5 and 2B.7: Notification of all external administration and controller appointments – 12-month rolling average (with comparison to prior year rolling average and base level)

- The 12-month rolling average is provided by appointment type (2B.3), region (2B.5) and industry (totals only) (1B.7), and includes:
 - the actual number of external administration and controller appointments reported in the most recently published Series 2 statistics (with the published appointment statistics for the first month of the rolling average period pro-rated based on the number of days in that month included in the rolling average period)
 - provisional statistics for the subsequent period up to the stated period end reporting date. The provisional statistics are based on the number of notifications of appointment lodged. (NOTE: The provisional statistics will change and be updated as additional notifications of appointment are lodged for appointments made during the reporting period)
 - base level is calculated using the average of Series 2 statistics for FY 2017, FY 2018 and FY 2019 (excludes 2B.7). This will be a static amount.

Example: The number of external administration and controller appointments for the rolling average period 6 January 2020 to 5 January 2021 includes:

- Series 2 statistics for the month of January 2020 (pro-rated based on the number of days during the period 6 January to 31 January e.g. for 25/31 of the Series 2 statistics for January 2020)
- Series 2 statistics for the period 1 February 2020 to 30 November 2020
- provisional statistics for the period 1 December 2020 to 5 January 2021.

This number is compared to the actual number of external administration and controller appointments reported in Series 2 for the corresponding previous 12-month period (e.g. 6 January 2019 to 5 January 2021) with appointments for January 2019 and 2020 pro-rated based on the number of days (e.g. 25/31 days in January 2019 and 5/31 days in January 2020 respectively).

For clarity, we break out provisional numbers into separate tables for appointments made in the preceding full month (which has not yet been published in the Series 2 statistics) and the current part month except for industry 2B.7.

Series 2B.4, 2B.6 and 2B.8: Notification of all external administration and controller appointments – financial year to date (with comparison to prior financial year and base level)

- The financial year to date statistics are provided by appointment (2B.4), region (2B.6) and industry (totals only) (2B.8), and include:
 - the actual number of external administration and controller appointments reported in the most recently published Series 2 statistics for the current financial year
 - provisional statistics for the subsequent period up to the stated period end reporting date. The provisional statistics are based on the number of notifications of appointment lodged. (NOTE: The provisional statistics will change and be updated as additional notifications of appointment are lodged for appointments made during the reporting period)
 - base level figures is calculated using the average of Series 2 statistics for FY 2017, FY 2018 and FY 2019 for the period from 1 July of the financial year up to the end period of the financial year to date being reported (excludes 2B.8).

Example: The number of external administration and controller appointments for the financial year to date 1 July 2020 to 5 January 2021 includes:

- Series 2 statistics for the period 1 July 2020 to 30 November 2020
- provisional statistics for the period 1 December 2020 to 5 January 2021

This number is compared to the actual number of external administration and controller appointments reported for the corresponding period in the previous financial year (e.g. 1 July 2019 to 5 January 2020) with appointments for January 2020 pro-rated based on the number of days in the reporting period (e.g. 5/31 of the Series 2 statistics for January 2020).

For clarity, we break out provisional numbers into separate tables for appointments made in the preceding full month (which has not yet been published in the Series 2) and the current part month except for industry 2B.8.

Table 2B.1: Notification of all external administration and controller appointments - Total, WEEKLY, Base level, FY20 & FY21 YTD

WEEK		Base level	FY20	FY21	Change from same week last year		Change from last week	
Starting	No.	No.	No.	No.	No.	%	No.	%
01-Jul	Wk 01	236	224	142	-82	↓ -36.6%	0	→ 0.0%
08-Jul	Wk 02	196	223	117	-106	↓ -47.5%	-25	↓ -17.6%
15-Jul	Wk 03	245	201	123	-78	↓ -38.8%	6	↑ 5.1%
22-Jul	Wk 04	255	222	97	-125	↓ -56.3%	-26	↓ -21.1%
29-Jul	Wk 05	223	273	81	-192	↓ -70.3%	-16	↓ -16.5%
05-Aug	Wk 06	231	244	104	-140	↓ -57.4%	23	↑ 28.4%
12-Aug	Wk 07	230	198	83	-115	↓ -58.1%	-21	↓ -20.2%
19-Aug	Wk 08	222	247	110	-137	↓ -55.5%	27	↑ 32.5%
26-Aug	Wk 09	233	228	72	-156	↓ -68.4%	-38	↓ -34.5%
02-Sep	Wk 10	187	230	146	-84	↓ -36.5%	74	↑ 102.8%
09-Sep	Wk 11	215	193	138	-55	↓ -28.5%	-8	↓ -5.5%
16-Sep	Wk 12	210	252	122	-130	↓ -51.6%	-16	↓ -11.6%
23-Sep	Wk 13	194	233	135	-98	↓ -42.1%	13	↑ 10.7%
30-Sep	Wk 14	207	213	82	-131	↓ -61.5%	-53	↓ -39.3%
07-Oct	Wk 15	198	182	91	-91	↓ -50.0%	9	↑ 11.0%
14-Oct	Wk 16	198	213	84	-129	↓ -60.6%	-7	↓ -7.7%
21-Oct	Wk 17	197	236	78	-158	↓ -66.9%	-6	↓ -7.1%
28-Oct	Wk 18	210	279	73	-206	↓ -73.8%	-5	↓ -6.4%
04-Nov	Wk 19	215	182	98	-84	↓ -46.2%	25	↑ 34.2%
11-Nov	Wk 20	196	207	86	-121	↓ -58.5%	-12	↓ -12.2%
18-Nov	Wk 21	196	300	95	-205	↓ -68.3%	9	↑ 10.5%
25-Nov	Wk 22	216	215	152	-63	↓ -29.3%	57	↑ 60.0%
02-Dec	Wk 23	214	231	112	-119	↓ -51.5%	-40	↓ -26.3%
09-Dec	Wk 24	245	205	124	-81	↓ -39.5%	12	↑ 10.7%
16-Dec	Wk 25	263	428	241	-187	↓ -43.7%	117	↑ 94.4%
23-Dec	Wk 26	49	52	88	36	↑ 69.2%	-153	↓ -63.5%
30-Dec	Wk 27	39	21	96	75	↑ 357.1%	8	↑ 9.1%
06-Jan	Wk 28	89	110	47	-63	↓ -57.3%	-49	↓ -51.0%
13-Jan	Wk 29	160	178	59	-119	↓ -66.9%	12	↑ 25.5%
20-Jan	Wk 30	152	143	61	-82	↓ -57.3%	2	↑ 3.4%
27-Jan	Wk 31	195	142	89	-53	↓ -37.3%	28	↑ 45.9%
03-Feb	Wk 32	198	223	111	-112	↓ -50.2%	22	↑ 24.7%
10-Feb	Wk 33	190	191	133	-58	↓ -30.4%	22	↑ 19.8%
17-Feb	Wk 34	181	193	147	-46	↓ -23.8%	14	↑ 10.5%
24-Feb	Wk 35	232	249	132	-117	↓ -47.0%	-15	↓ -10.2%
03-Mar	Wk 36	201	213	115	-98	↓ -46.0%	-17	↓ -12.9%
10-Mar	Wk 37	201	183	108	-75	↓ -41.0%	-7	↓ -6.1%
17-Mar	Wk 38	220	224	131	-93	↓ -41.5%	23	↑ 21.3%
24-Mar	Wk 39	265	194	141	-53	↓ -27.3%	10	↑ 7.6%
31-Mar	Wk 40	193	192	95	-97	↓ -50.5%	-46	↓ -32.6%
07-Apr	Wk 41	239	142	116	-26	↓ -18.3%	21	↑ 22.1%
14-Apr	Wk 42	181	129	154	25	↑ 19.4%	38	↑ 32.8%
21-Apr	Wk 43	154	174	105	-69	↓ -39.7%	-49	↓ -31.8%
28-Apr	Wk 44	238	126	126	0	↑ 0.0%	21	↑ 20.0%
05-May	Wk 45	221	142	118	-24	↓ -16.9%	-8	↓ -6.3%
12-May	Wk 46	216	147	123	-24	↓ -16.3%	5	↑ 4.2%
19-May	Wk 47	244	157					
26-May	Wk 48	242	166					
02-Jun	Wk 49	226	96					
09-Jun	Wk 50	232	92					
16-Jun	Wk 51	249	131					
23-Jun	Wk 52	305	191					

Note 1: Shading indicates the figures are provisional and subject to revision given time lag in lodging forms

Note 2: Base level is the average of financial years FY17, 18 & 19.

Chart 2B.1: Notification of all external administration and controller appointments
- Total, WEEKLY, Base level, FY20 & FY21 YTD

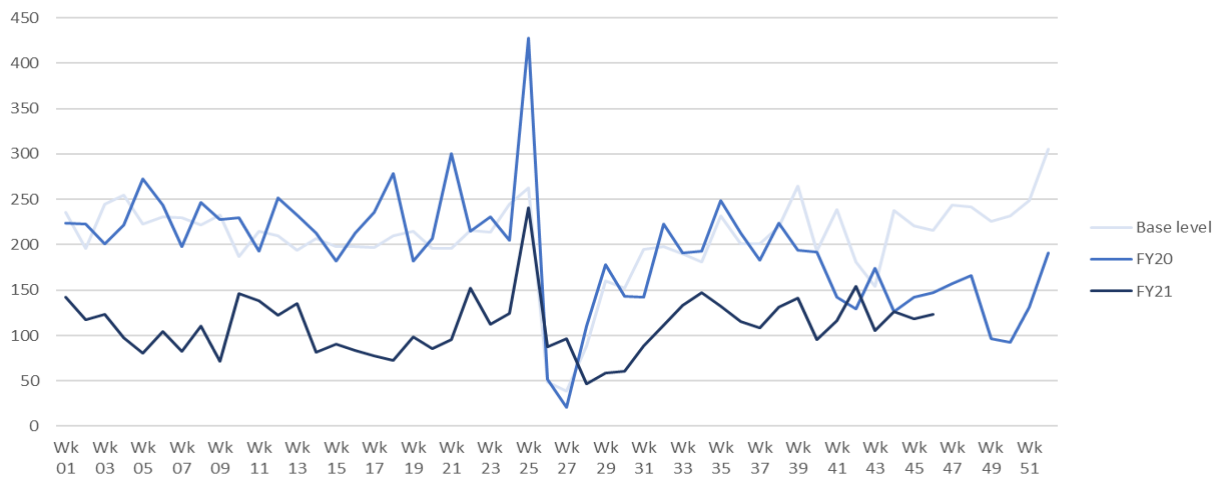


Table 2B.2: Notification of all external administration and controller appointments - Appointment type, WEEKLY (comparison to same week last year), FY20 & FY21 YTD

WEEK		COURT WIND-UP			CREDITORS WIND-UP			CONTROLLER APPOINTMENTS			VOLUNTARY ADMINISTRATION			DEED ADMINISTRATION			RESTRUCTURING	RESTRUCTURING PLAN	TOTAL			SIMPLIFIED LIQUIDATION
Starting	No.	FY20	FY21	Change	FY20	FY21	Change	FY20	FY21	Change	FY20	FY21	Change	FY20	FY21	Change	FY21	FY21	FY20	FY21	Change	FY21
01-Jul	Wk 01	40	31	↓ -9	117	63	↓ -54	40	23	↓ -17	20	16	↓ -4	7	9	↑ 2	n/a	n/a	224	142	↓ -82	n/a
08-Jul	Wk 02	42	6	↓ -36	111	69	↓ -42	42	17	↓ -25	24	16	↓ -8	4	9	↑ 5	n/a	n/a	223	117	↓ -106	n/a
15-Jul	Wk 03	42	25	↓ -17	100	58	↓ -42	23	15	↓ -8	24	22	↓ -2	12	3	↓ -9	n/a	n/a	201	123	↓ -78	n/a
22-Jul	Wk 04	56	15	↓ -41	104	57	↓ -47	29	8	↓ -21	28	12	↓ -16	5	5	→ 0	n/a	n/a	222	97	↓ -125	n/a
29-Jul	Wk 05	73	12	↓ -61	95	46	↓ -49	28	7	↓ -21	74	10	↓ -64	3	6	↑ 3	n/a	n/a	273	81	↓ -192	n/a
05-Aug	Wk 06	49	17	↓ -32	101	57	↓ -44	27	13	↓ -14	65	9	↓ -56	2	8	↑ 6	n/a	n/a	244	104	↓ -140	n/a
12-Aug	Wk 07	39	8	↓ -31	113	47	↓ -66	23	14	↓ -9	17	8	↓ -9	6	6	→ 0	n/a	n/a	198	83	↓ -115	n/a
19-Aug	Wk 08	44	4	↓ -40	122	66	↓ -56	55	17	↓ -38	22	11	↓ -11	4	12	↑ 8	n/a	n/a	247	110	↓ -137	n/a
26-Aug	Wk 09	46	8	↓ -38	96	46	↓ -50	41	7	↓ -34	40	7	↓ -33	5	4	↓ -1	n/a	n/a	228	72	↓ -156	n/a
02-Sep	Wk 10	45	9	↓ -37	122	77	↓ -45	33	22	↓ -11	18	10	↓ -8	11	28	↑ 17	n/a	n/a	230	146	↓ -84	n/a
09-Sep	Wk 11	35	12	↓ -23	83	80	↓ -3	55	36	↓ -19	16	5	↓ -11	4	5	↑ 1	n/a	n/a	193	138	↓ -55	n/a
16-Sep	Wk 12	59	26	↓ -33	123	68	↓ -55	24	17	↓ -7	35	10	↓ -25	11	1	↓ -10	n/a	n/a	252	122	↓ -130	n/a
23-Sep	Wk 13	56	9	↓ -47	121	52	↓ -69	19	20	↑ 1	24	8	↓ -16	13	46	↑ 33	n/a	n/a	233	135	↓ -98	n/a
30-Sep	Wk 14	65	3	↓ -62	98	53	↓ -45	24	12	↓ -12	20	10	↓ -10	6	4	↓ -2	n/a	n/a	213	82	↓ -131	n/a
07-Oct	Wk 15	44	4	↓ -40	94	50	↓ -44	24	18	↓ -6	18	9	↓ -9	2	10	↑ 8	n/a	n/a	182	91	↓ -91	n/a
14-Oct	Wk 16	56	3	↓ -53	113	55	↓ -58	24	12	↓ -12	16	10	↓ -6	4	4	→ 0	n/a	n/a	213	84	↓ -129	n/a
21-Oct	Wk 17	52	6	↓ -44	113	42	↓ -71	37	21	↓ -16	32	5	↓ -27	4	4	→ 0	n/a	n/a	236	78	↓ -158	n/a
28-Oct	Wk 18	50	3	↓ -47	157	49	↓ -108	40	13	↓ -27	25	6	↓ -19	7	2	↓ -5	n/a	n/a	279	73	↓ -206	n/a
04-Nov	Wk 19	45	4	↓ -41	91	54	↓ -37	21	7	↓ -14	20	18	↓ -2	5	15	↑ 10	n/a	n/a	182	98	↓ -84	n/a
11-Nov	Wk 20	46	5	↓ -42	106	53	↓ -53	28	14	↓ -14	21	13	↓ -8	5	1	↓ -4	n/a	n/a	207	86	↓ -121	n/a
18-Nov	Wk 21	70	13	↓ -58	93	57	↓ -36	41	13	↓ -28	84	9	↓ -75	11	3	↓ -8	n/a	n/a	300	95	↓ -205	n/a
25-Nov	Wk 22	58	11	↓ -47	109	57	↓ -52	23	25	↑ 2	18	54	↑ 36	7	5	↓ -2	n/a	n/a	215	152	↓ -63	n/a
02-Dec	Wk 23	39	6	↓ -33	143	45	↓ -98	31	41	↑ 10	8	14	↑ 6	10	6	↓ -4	n/a	n/a	231	112	↓ -119	n/a
09-Dec	Wk 24	65	6	↓ -58	88	82	↓ -6	24	18	↓ -6	25	11	↓ -14	4	7	↑ 3	n/a	n/a	205	124	↓ -81	n/a
16-Dec	Wk 25	71	17	↓ -53	251	176	↓ -75	24	20	↓ -4	46	17	↓ -29	37	11	↓ -26	n/a	n/a	428	241	↓ -187	n/a
23-Dec	Wk 26	1	6	↑ 5	30	39	↑ 9	7	11	↑ 4	9	21	↑ 12	5	11	↑ 6	n/a	n/a	52	88	↑ 36	n/a
30-Dec	Wk 27	0	8	↑ 8	16	22	↑ 6	1	27	↑ 26	3	38	↑ 35	1	1	→ 0	0	0	21	96	↑ 75	0
06-Jan	Wk 28	1	1	→ 0	66	31	↓ -35	10	10	→ 0	14	5	↓ -9	19	0	↓ -19	0	0	110	47	↓ -63	0
13-Jan	Wk 29	14	2	↓ -12	102	37	↓ -65	29	8	↓ -21	23	4	↓ -19	10	8	↓ -2	0	0	178	59	↓ -119	0
20-Jan	Wk 30	33	3	↓ -30	68	38	↓ -30	19	10	↓ -9	17	7	↓ -10	6	3	↓ -3	0	0	143	61	↓ -82	0
27-Jan	Wk 31	30	7	↓ -23	71	55	↓ -16	21	13	↓ -8	16	12	↓ -4	4	1	↓ -3	1	0	142	89	↓ -53	0
03-Feb	Wk 32	62	15	↓ -47	105	75	↓ -30	35	8	↓ -27	19	6	↓ -13	2	7	↑ 5	0	0	223	111	↓ -112	0
10-Feb	Wk 33	46	6	↓ -39	74	87	↑ 13	15	25	↑ 10	54	10	↓ -44	3	4	↑ 1	1	0	191	133	↓ -58	1
17-Feb	Wk 34	46	12	↓ -34	92	55	↓ -37	26	22	↓ -4	19	56	↑ 37	10	2	↓ -8	0	0	193	147	↓ -46	2
24-Feb	Wk 35	50	7	↓ -43	136	66	↓ -70	33	13	↓ -20	23	17	↓ -6	7	28	↑ 21	1	0	249	132	↓ -117	3
03-Mar	Wk 36	48	3	↓ -45	100	62	↓ -38	19	15	↓ -4	37	25	↓ -12	9	10	↑ 1	0	0	213	115	↓ -98	2
10-Mar	Wk 37	33	9	↓ -25	84	59	↓ -25	39	21	↓ -18	23	13	↓ -10	3	4	↑ 1	2	0	183	108	↓ -75	2
17-Mar	Wk 38	48	10	↓ -38	122	68	↓ -54	29	31	↑ 2	24	19	↓ -5	1	2	↑ 1	0	1	224	131	↓ -93	1
24-Mar	Wk 39	25	31	↑ 7	111	77	↓ -34	32	13	↓ -19	20	17	↓ -3	7	3	↓ -4	0	0	194	141	↓ -53	1
31-Mar	Wk 40	34	12	↓ -22	111	64	↓ -47	18	6	↓ -12	21	12	↓ -9	8	1	↓ -7	0	0	192	95	↓ -97	0
07-Apr	Wk 41	24	20	↓ -4	76	62	↓ -14	16	19	↑ 3	17	5	↓ -12	14	9	↑ 0	0	0	142	116	↓ -26	0
14-Apr	Wk 42	17	20	↑ 3	71	99	↑ 28	21	14	↓ -7	18	16	↓ -2	2	3	↑ 1	1	1	129	154	↑ 25	1
21-Apr	Wk 43	16	16	→ 0	73	70	↓ -3	27	9	↓ -18	50	9	↓ -41	8	1	↓ -7	0	0	174	105	↓ -69	0
28-Apr	Wk 44	20	27	↑ 7	62	64	↑ 2	10	11	↑ 1	15	17	↑ 2	19	6	↓ -13	0	1	126	126	→ 0	1
05-May	Wk 45	16	14	↓ -2	83	68	↓ -15	23	16	↓ -7	16	12	↓ -4	4	6	↑ 2	2	0	142	118	↓ -24	1
12-May	Wk 46	34	24	↓ -9	87	77	↓ -10	10	8	↓ -2	13	12	↓ -1	4	1	↓ -3	1	0	147	123	↓ -24	0
19-May	Wk 47	15			83			50			15			5					168			
26-May	Wk 48	20			97			15			28			4					164			
02-Jun	Wk 49	16			47			15			12			6					96			
09-Jun	Wk 50	14			57			8			13			1					93			
16-Jun	Wk 51	24			64			25			11			6					130			
23-Jun	Wk 52	18			89			41			22			23					193			

Note: Shading indicates the figures are provisional and subject to revision given time lag in lodging forms

Chart 2B.2: Notification of all external administration and controller appointments - Appointment type, WEEKLY (comparison to same week last year), FY20 & FY21 YTD

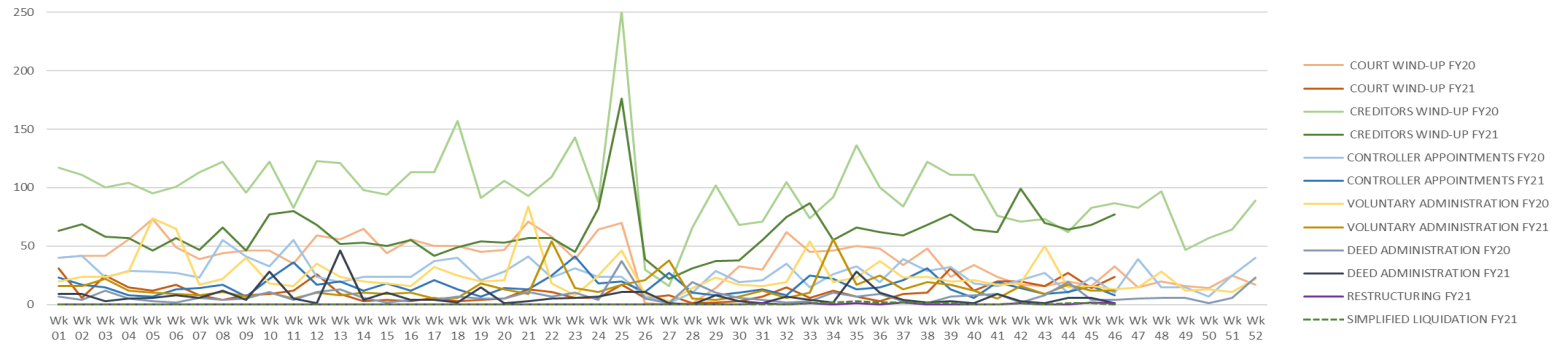


Table 2B.3: Notification of all external administration and controller appointments - Appointment type, 12-month rolling average

Rolling YTD (Published)	Mar-20	Mar-21	% change from prior FY
Court wind-up	2,204	522	(76.3%)
Creditors wind-up	4,948	2,860	(42.2%)
Controller appointments	1,297	807	(37.8%)
Voluntary Administration	1,248	685	(45.1%)
Deed Administration	346	349	0.9%
Restructuring	n/a	5	n/a
Restructuring plan	n/a	1	n/a
Total	10,043	5,229	(47.9%)
Simplified liquidation	n/a	11	n/a

Monthly (Provisional)	Apr-20	Apr-21	% change from prior FY
Court wind-up	105	81	(22.9%)
Creditors wind-up	312	315	1.0%
Controller appointments	79	54	(31.6%)
Voluntary Administration	111	44	(60.4%)
Deed Administration	43	18	(58.1%)
Restructuring	n/a	1	n/a
Restructuring plan	n/a	3	n/a
Total	650	516	(20.6%)
Simplified liquidation	n/a	1	n/a

Monthly (Provisional)	1-9 May 2020	1-9 May 2021	% change from prior FY
Court wind-up	25	16	(36.0%)
Creditors wind-up	105	56	(47.0%)
Controller appointments	27	13	(52.0%)
Voluntary Administration	21	14	(33.0%)
Deed Administration	6	6	0.0%
Restructuring	n/a	0	n/a
Restructuring plan	n/a	0	n/a
Total	184	105	(42.9%)
Simplified liquidation	n/a	0	n/a

12 Month rolling average (Provisional)	Base level	9 May 2020	9 May 2021	% change from base level FY	% change from prior FY
Court wind-up	2,764	2,334	619	(77.6%)	(73.5%)
Creditors wind-up	5,195	5,365	3,231	(37.8%)	(39.8%)
Controller appointments	1,074	1,403	874	(18.6%)	(37.7%)
Voluntary Administration	1,236	1,380	743	(39.9%)	(46.2%)
Deed Administration	439	395	373	(15.0%)	(5.6%)
Restructuring	n/a	n/a	6	n/a	n/a
Restructuring plan	n/a	n/a	4	n/a	n/a
Total	10,708	10,877	5,850	(45.4%)	(46.2%)
Simplified liquidation	n/a	n/a	12	n/a	n/a

Note: Base level is the average of the financial years FY17, FY18 and FY19. (This number will be static in this table.)

Chart 2B.3: Notification of all external administration and controller appointments - Appointment type, 12-month rolling average to 9 May 2021

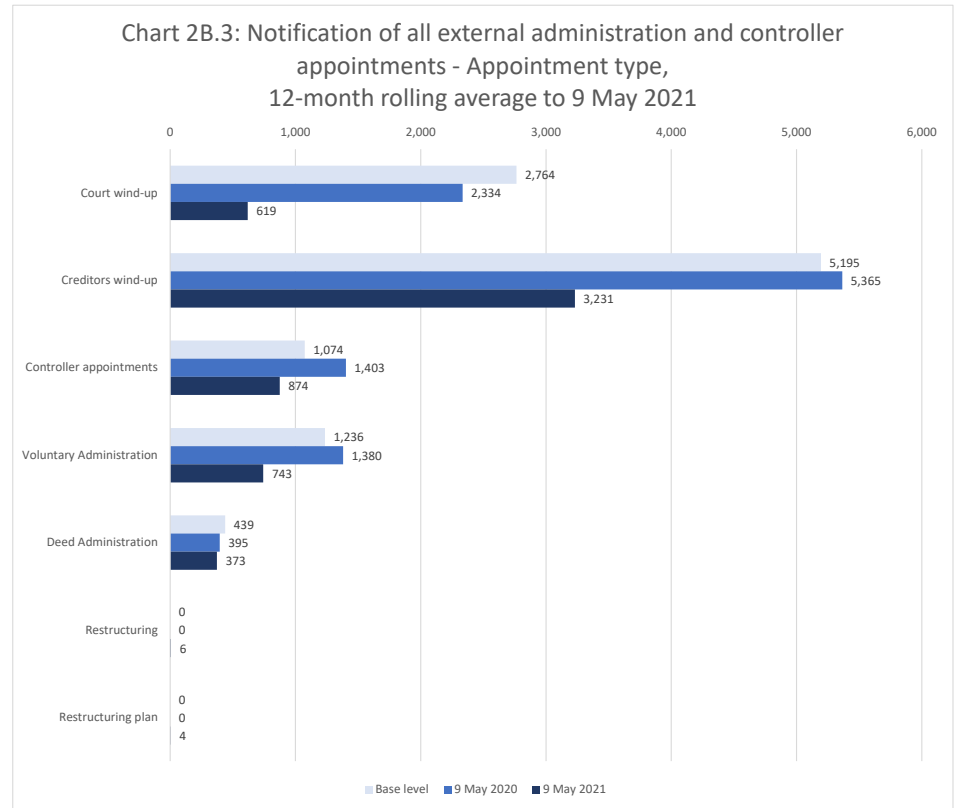


Table 2B.4: Notification of all external administration and controller appointments - Appointment type, Financial year to date

Financial YTD (Published)	Mar-BL	Mar-20	Mar-21	% change from base level FY	% change from prior FY
Court wind-up	2,042	1,726	391	(80.9%)	(77.3%)
Creditors wind-up	3,756	4,110	2,358	(37.2%)	(42.6%)
Controller appointments	773	1,103	658	(14.9%)	(40.3%)
Voluntary Administration	914	1,049	577	(36.9%)	(45.0%)
Deed Administration	338	277	299	(11.5%)	7.9%
Restructuring	n/a	n/a	5	n/a	n/a
Restructuring plan	n/a	n/a	1	n/a	n/a
Total	7,823	8,265	4,289	(45.2%)	(48.1%)
Simplified liquidation	n/a	n/a	11	n/a	n/a

Monthly (Provisional)	Apr-BL	Apr-20	Apr-21	% change from base level FY	% change from prior FY
Court wind-up	189	105	81	(57.1%)	(22.9%)
Creditors wind-up	416	312	315	(24.3%)	1.0%
Controller appointments	84	79	54	(35.7%)	(31.6%)
Voluntary Administration	95	111	44	(53.7%)	(60.4%)
Deed Administration	28	43	18	(35.7%)	(58.1%)
Restructuring	n/a	n/a	1	n/a	n/a
Restructuring plan	n/a	n/a	3	n/a	n/a
Total	812	650	516	(36.5%)	(20.6%)
Simplified liquidation	812	n/a	1	n/a	n/a

Monthly (Provisional)	1-9 May BL	1-9 May 2020	1-9 May 2021	% change from base level FY	% change from prior FY
Court wind-up	79	25	16	(79.7%)	(36.0%)
Creditors wind-up	151	105	56	(62.9%)	(47.0%)
Controller appointments	36	27	13	(63.9%)	(52.0%)
Voluntary Administration	36	21	14	(61.1%)	(33.0%)
Deed Administration	8	6	6	(25.0%)	0.0%
Restructuring	n/a	n/a	0	n/a	n/a
Restructuring plan	n/a	n/a	0	n/a	n/a
Total	310	184	105	(66.1%)	(42.9%)
Simplified liquidation	n/a	n/a	0	n/a	n/a

Financial YTD (Provisional)	9 May BL	9 May 2020	9 May 2021	% change from base level FY	% change from prior FY
Court wind-up	2,310	1,856	488	(78.9%)	(73.7%)
Creditors wind-up	4,323	4,527	2,729	(36.9%)	(39.7%)
Controller appointments	893	1,209	725	(18.8%)	(40.0%)
Voluntary Administration	1,045	1,181	635	(39.2%)	(46.2%)
Deed Administration	374	326	323	(13.6%)	(0.9%)
Restructuring	n/a	n/a	6	n/a	n/a
Restructuring plan	n/a	n/a	4	n/a	n/a
Total	8,945	9,099	4,910	(45.1%)	(46.0%)
Simplified liquidation	n/a	n/a	12	n/a	n/a

Note: Base level is the average of the financial years FY17, FY18 and FY19.

Chart 2B.4: Notification of all external administration and controller appointments - Appointment type, financial year to date (9 May 2021)

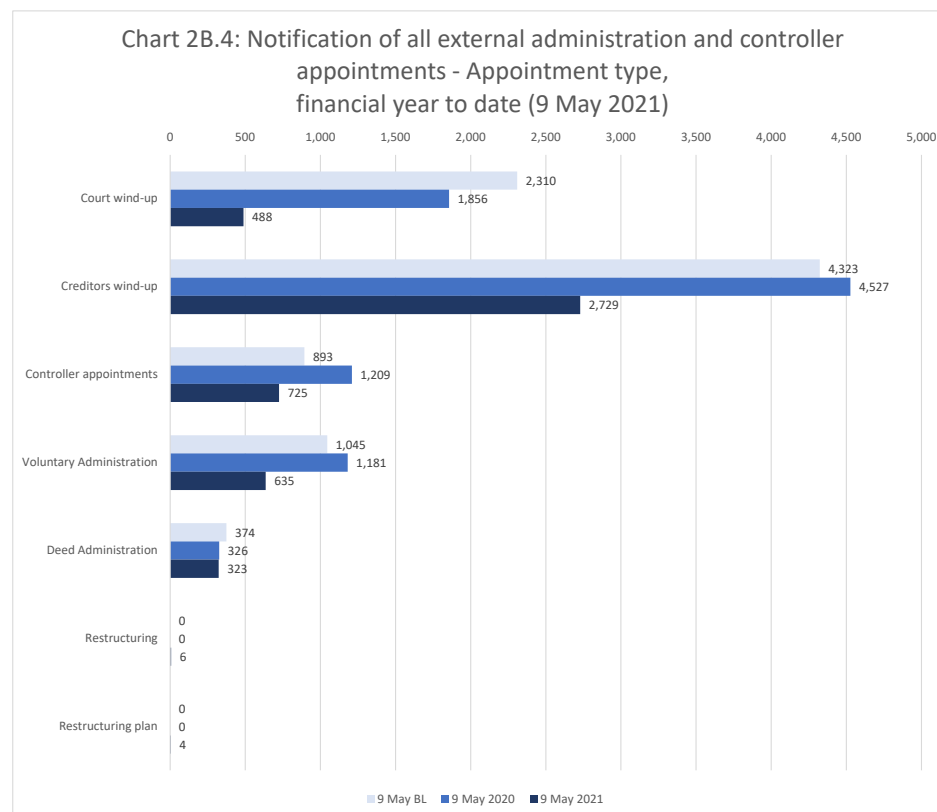


Table 2B.5: Notification of all external administration and controller appointments - Region, 12-month rolling average

Rolling YTD (Published)	Mar-20	Mar-21	% change from prior FY
New South Wales	3,553	1,860	(47.6%)
Victoria	3,062	1,723	(43.7%)
Queensland	1,799	907	(49.6%)
South Australia	376	165	(56.1%)
Western Australia	989	430	(56.5%)
Tasmania	45	18	(60.0%)
Northern Territory	45	20	(55.6%)
Australian Capital Territory	174	106	(39.1%)
Total	10,043	5,229	(47.9%)

Monthly (Provisional)	Apr-20	Apr-21	% change from prior FY
New South Wales	210	180	(14.3%)
Victoria	220	156	(29.1%)
Queensland	115	92	(20.0%)
South Australia	32	24	(25.0%)
Western Australia	42	43	2.4%
Tasmania	5	1	(80.0%)
Northern Territory	8	6	(25.0%)
Australian Capital Territory	18	14	(22.2%)
Total	650	516	(20.6%)

Monthly (Provisional)	1-9 May 2020	1-9 May 2021	% change from prior FY
New South Wales	50	45	(10.0%)
Victoria	72	30	(58.3%)
Queensland	31	9	(71.0%)
South Australia	5	3	(40.0%)
Western Australia	17	14	(17.6%)
Tasmania	3	2	(33.3%)
Northern Territory	1	0	(100.0%)
Australian Capital Territory	5	2	(60.0%)
Total	184	105	(42.9%)

12 Month rolling average (Provisional)	Base level	9 May 2020	9 May 2021	% change from base level FY	% change from prior FY
New South Wales	3,463	3,813	2,085	(39.8%)	(45.3%)
Victoria	2,965	3,354	1,909	(35.6%)	(43.1%)
Queensland	2,168	1,945	1,008	(53.5%)	(48.2%)
South Australia	434	413	192	(55.8%)	(53.5%)
Western Australia	1,340	1,048	487	(63.7%)	(53.5%)
Tasmania	72	53	21	(70.8%)	(60.4%)
Northern Territory	75	54	26	(65.3%)	(51.9%)
Australian Capital Territory	191	197	122	(36.1%)	(38.1%)
Total	10,708	10,877	5,850	(45.4%)	(46.2%)

Note: Base level is the average of the financial years FY17, FY18 and FY19. (This number will be static in this table.)

Chart 2B.5: Notification of all external administration and controller appointments - Region, 12-month rolling average to 9 May 2021

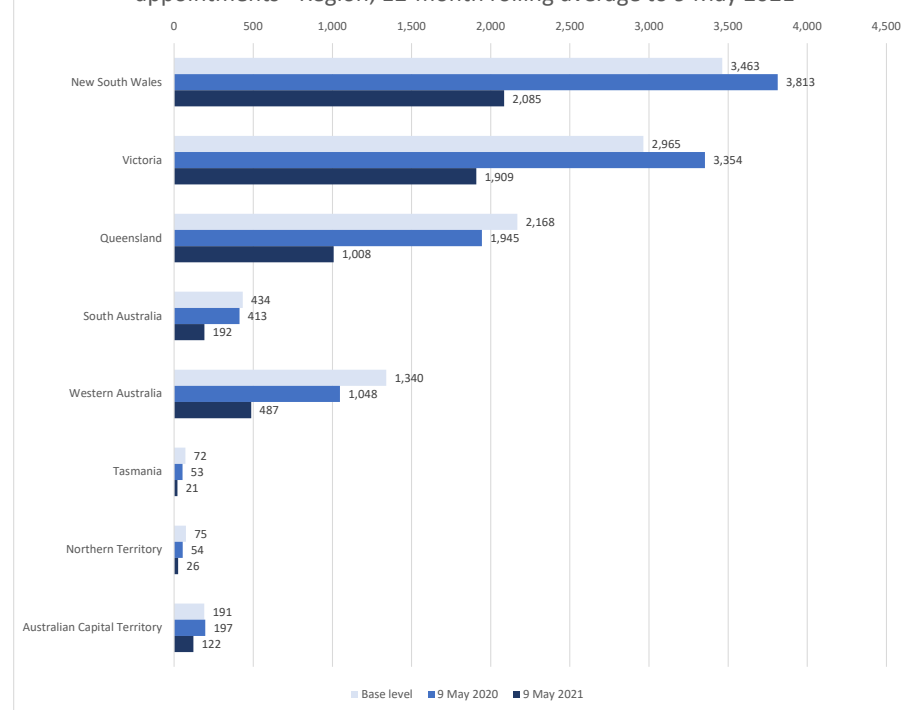


Table 2B.6: Notification of all external administration and controller appointments - Region, Financial year to date

Financial YTD (Published)	Mar-BL	Mar-20	Mar-21	% change from base level FY	% change from prior FY
New South Wales	2,515	2,890	1,569	(37.6%)	(45.7%)
Victoria	2,142	2,590	1,405	(34.4%)	(45.8%)
Queensland	1,622	1,494	720	(55.6%)	(51.8%)
South Australia	317	303	136	(57.1%)	(55.1%)
Western Australia	987	774	347	(64.8%)	(55.2%)
Tasmania	50	29	8	(84.0%)	(72.4%)
Northern Territory	54	42	15	(72.2%)	(64.3%)
Australian Capital Territory	136	143	89	(34.6%)	(37.8%)
Total	7,823	8,265	4,289	(45.2%)	(48.1%)

Monthly (Provisional)	Apr-BL	Apr-20	Apr-21	% change from base level FY	% change from prior FY
New South Wales	259	210	180	(30.5%)	(14.3%)
Victoria	251	220	156	(37.8%)	(29.1%)
Queensland	149	115	92	(38.3%)	(20.0%)
South Australia	35	32	24	(31.4%)	(25.0%)
Western Australia	91	42	43	(52.7%)	2.4%
Tasmania	5	5	1	(80.0%)	(80.0%)
Northern Territory	7	8	6	(14.3%)	(25.0%)
Australian Capital Territory	15	18	14	(6.7%)	(22.2%)
Total	812	650	516	(36.5%)	(20.6%)

Monthly (Provisional)	1-9 May BL	1-9 May 2020	1-9 May 2021	% change from base level FY	% change from prior FY
New South Wales	103	50	45	(56.3%)	(10.0%)
Victoria	86	72	30	(65.1%)	(58.3%)
Queensland	58	31	9	(84.5%)	(71.0%)
South Australia	13	5	3	(76.9%)	(40.0%)
Western Australia	39	17	14	(64.1%)	(17.6%)
Tasmania	3	3	2	(33.3%)	(33.3%)
Northern Territory	2	1	0	(100.0%)	(100.0%)
Australian Capital Territory	6	5	2	(66.7%)	(60.0%)
Total	310	184	105	(66.1%)	(42.9%)

Financial YTD (Provisional)	9 May BL	9 May 2020	9 May 2021	% change from base level FY	% change from prior FY
New South Wales	2,877	3,150	1,794	(37.6%)	(43.0%)
Victoria	2,479	2,882	1,591	(35.8%)	(44.8%)
Queensland	1,829	1,640	821	(55.1%)	(49.9%)
South Australia	365	340	163	(55.3%)	(52.1%)
Western Australia	1,117	833	404	(63.8%)	(51.5%)
Tasmania	58	37	11	(81.0%)	(70.3%)
Northern Territory	63	51	21	(66.7%)	(58.8%)
Australian Capital Territory	157	166	105	(33.1%)	(36.7%)
Total	8,945	9,099	4,910	(45.1%)	(46.0%)

Note: Base level is the average of the financial years FY17, FY18 and FY19.

Chart 2B.6: Notification of all external administration and controller appointments - Region, Financial year to date (9 May 2021)

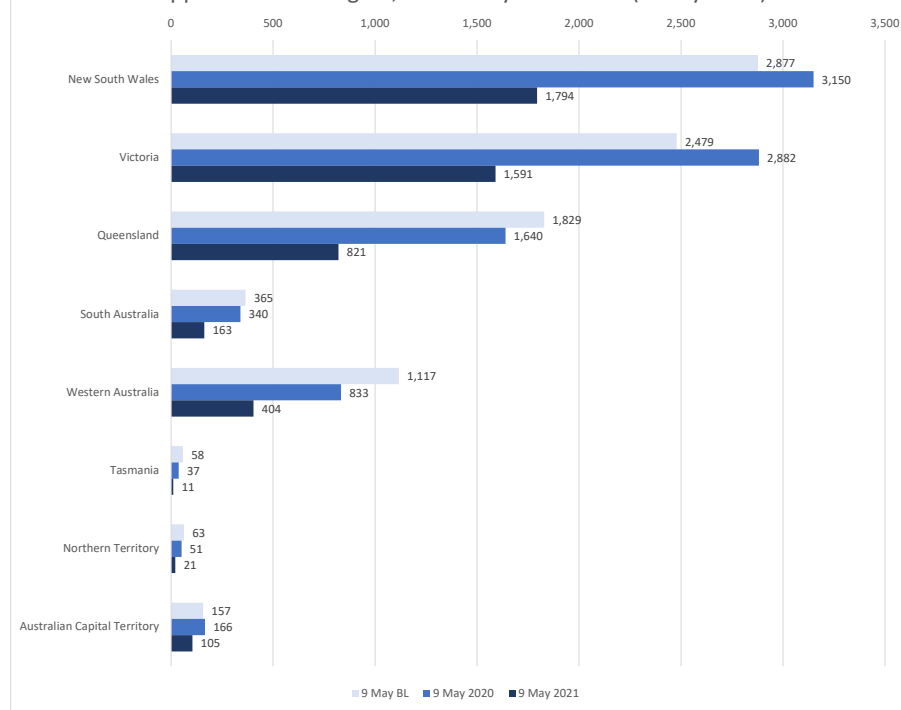


Table 2B.7: Notification of all external administration and controller appointments - Industry, 12-month rolling average

	Rolling YTD (Published)			Monthly (Provisional)			Monthly (Provisional)			12 Month rolling average (Provisional)		
	Mar-20	Mar-21	% change	Apr-20	Apr-21	% change	1-9 May 2020	1-9 May 2021	% change	9 May 2020	9 May 2021	% change
Accommodation & food services	1,132	569	(49.7%)	83	61	(25.5%)	23	9	(60.9%)	1,238	639	(48.4%)
Administrative & support services	40	26	(35.0%)	2	2	0.0%	2	0	(100.0%)	44	28	(36.4%)
Agriculture, forestry & fishing	129	71	(45.0%)	11	13	18.2%	4	0	(100.0%)	144	84	(41.7%)
Arts & recreation services	65	56	(13.8%)	4	5	25.0%	2	0	(100.0%)	71	61	(14.1%)
Construction	2,009	1,082	(46.1%)	82	112	36.6%	29	34	17.2%	2,120	1,228	(42.1%)
Education & training	97	61	(37.1%)	4	0	(100.0%)	2	1	(50.0%)	103	62	(39.8%)
Electricity, gas, water & waste services	231	86	(62.8%)	11	18	63.6%	3	2	(33.3%)	245	106	(56.7%)
Financial and Insurance Services	235	232	(1.3%)	28	25	(10.7%)	10	0	(100.0%)	273	257	(5.9%)
Health care & social assistance	111	69	(37.8%)	3	4	33.3%	3	1	(66.7%)	117	74	(36.8%)
Information media & tele-communications	152	67	(55.9%)	8	8	0.0%	3	1	(66.7%)	163	76	(53.4%)
Manufacturing	257	132	(48.6%)	19	16	(15.8%)	8	1	(87.5%)	284	149	(47.5%)
Mining	249	124	(50.2%)	20	5	(75.0%)	2	8	300.0%	271	137	(49.4%)
Other services	3,635	1,699	(53.3%)	202	162	(19.8%)	55	27	(50.9%)	3,892	1,888	(51.5%)
Professional, scientific & technical services	131	85	(35.1%)	16	3	(81.3%)	6	2	(66.7%)	153	90	(41.2%)
Public administration & safety	7	7	0.0%	1	0	0.0%	0	0	0.0%	8	7	(12.5%)
Rental, hiring & real estate services	252	201	(20.2%)	9	11	22.2%	3	4	33.3%	264	216	(18.2%)
Retail trade	619	354	(42.8%)	43	36	(16.3%)	19	5	(73.7%)	681	395	(42.0%)
Transport, postal & warehousing	425	215	(49.4%)	86	19	(77.9%)	6	7	16.7%	517	241	(53.4%)
Wholesale trade	171	76	(55.6%)	8	12	50.0%	3	2	(33.3%)	182	90	(50.5%)
Unknown	96	17	(82.3%)	10	4	(60.0%)	1	1	0.0%	107	22	(79.4%)
Total	10,043	5,229	(47.9%)	650	516	(20.6%)	184	105	(42.9%)	10,877	5,850	(46.2%)

Chart 2B.7: Notification of all external administration and controller appointments - Industry, 12-month rolling average to 9 May 2021

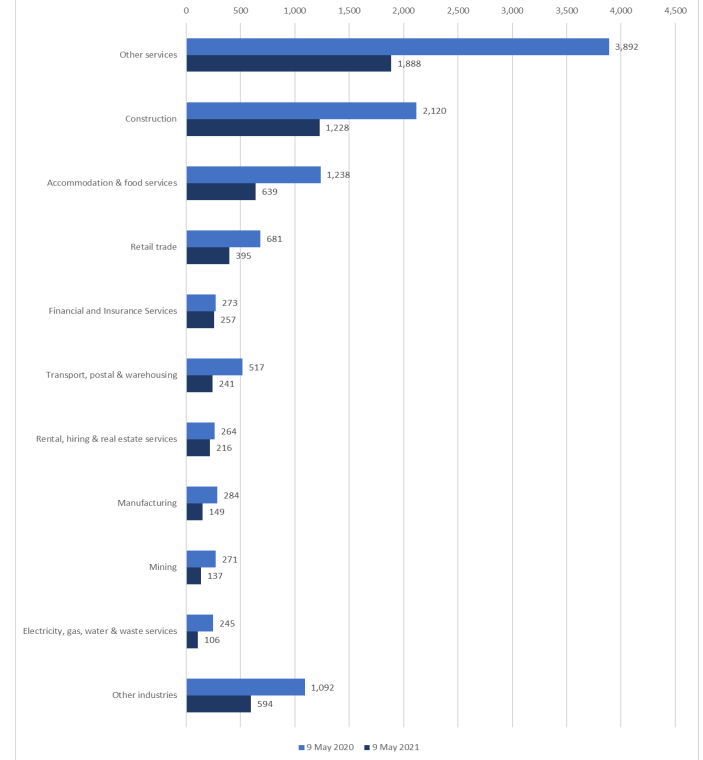


Table 2B.8: Notification of all external administration and controller appointments - Industry, Financial year to date

	Financial YTD (Published)			Monthly (Provisional)			Monthly (Provisional)			Financial YTD (Provisional)		
	Mar-20	Mar-21	% change	Apr-20	Apr-21	% change	1-9 May 2020	1-9 May 2021	% change	9 May 2020	9 May 2021	% change
Accommodation & food services	931	469	(49.6%)	83	61	(26.5%)	23	9	(60.9%)	1,037	539	(48.0%)
Administrative & support services	30	19	(36.7%)	2	2	0.0%	2	0	(100.0%)	34	21	(38.2%)
Agriculture, forestry & fishing	99	52	(47.5%)	11	13	18.2%	4	0	(100.0%)	114	65	(43.0%)
Arts & recreation services	57	49	(14.0%)	4	5	25.0%	2	0	(100.0%)	63	54	(14.3%)
Construction	1,680	923	(45.1%)	82	112	36.6%	29	34	17.2%	1,791	1,069	(40.3%)
Education & training	88	53	(39.8%)	4	0	(100.0%)	2	1	(50.0%)	94	54	(42.6%)
Electricity, gas, water & waste services	192	71	(63.0%)	11	18	63.6%	3	2	(33.3%)	206	91	(55.8%)
Financial and Insurance Services	203	198	(2.5%)	28	25	(10.7%)	10	0	(100.0%)	241	223	(7.5%)
Health care & social assistance	83	49	(41.0%)	3	4	33.3%	3	1	(66.7%)	89	54	(39.3%)
Information media & tele- communications	114	54	(52.6%)	8	8	0.0%	3	1	(66.7%)	125	63	(49.6%)
Manufacturing	196	109	(44.4%)	19	16	(15.8%)	8	1	(87.5%)	223	126	(43.5%)
Mining	210	93	(55.7%)	20	5	(75.0%)	2	8	300.0%	232	106	(54.3%)
Other services	3,021	1,395	(53.8%)	202	162	(19.8%)	55	27	(50.9%)	3,278	1,584	(51.7%)
Professional, scientific & technical services	108	61	(43.5%)	16	3	(81.3%)	6	2	(66.7%)	130	66	(49.2%)
Public administration & safety	6	7	16.7%	1	0	0.0%	0	0	0.0%	7	7	0.0%
Rental, hiring & real estate services	181	150	(17.1%)	9	11	22.2%	3	4	33.3%	193	165	(14.5%)
Retail trade	489	269	(45.0%)	43	36	(16.3%)	19	5	(73.7%)	551	310	(43.7%)
Transport, postal & warehousing	358	189	(47.2%)	86	19	(77.9%)	6	7	16.7%	450	215	(52.2%)
Wholesale trade	142	65	(54.2%)	8	12	50.0%	3	2	(33.3%)	153	79	(48.4%)
Unknown	77	14	(81.8%)	10	4	(60.0%)	1	1	0.0%	88	19	(78.4%)
Total	8,265	4,289	(48.1%)	650	516	(20.6%)	184	105	(42.9%)	9,099	4,910	(46.0%)

Chart 2B.8: Notification of all external administration and controller appointments - Industry, Financial year to date (9 May 2021)

